



ISO 9001:2015  
ISO 45001:2008 | ISO 14001:2015

# **Triune** ENGINEERING QATAR W.L.L.



**DESIGN, CONSTRUCTION, CIVIL & MEP, FIT OUT JOBS,  
MAINTENANCE AND MODIFICATIONS WORKS**

P.O. Box No.24348, Doha- Qatar | Tel : +974 44123845  
Email : [info@triuneqatar.com](mailto:info@triuneqatar.com) | Website : [www.triuneqatar.com](http://www.triuneqatar.com)



*Masters of  
Consistency  
and  
Quality*





### QUALITY POLICY

**Triune Engineering Qatar W.L.L.** commits to adhere to the highest standards of Quality. **Triune Engineering Qatar W.L.L.** will continually review and improve its processes and systems with special emphasis on the following:

- Establish and maintain the requirements of ISO 9001:2015 standard;
- Adopt and implement quality, methods, standards and defining roles, responsibilities and authorities;
- Set and maintain Quality Objectives, Targets and Management Programs at all levels for continual improvement in line with the requirements of ISO 9001:2015 standard;
- Constantly monitor, evaluate and enhance quality performance through Quality Objectives, implementing relevant processes and activities and performance reviews;
- Identification of and Complying with applicable requirements including legislative and regulatory;
- Promote awareness among customers and other interested parties on quality, enhancing the awareness, level of competence and skills of employees through continuous training programs for organizational processes and
- Maintain effective internal and external communication including dissemination of Quality Policy to **Triune Engineering Qatar W.L.L.** - internally, interested parties and making it available to public at large.

**Jeess Joseph**  
Managing Director  
March 1, 2021



(Logo of CB)

Supported and Verified with expertise of  
AEGIS SERVICES L.L.C.



### HEALTH AND SAFETY POLICY

**Triune Engineering Qatar W.L.L.** is committed to reducing its impact on the environment. We will strive to improve our health and safety performance over time and to initiate additional projects and activities that will further reduce our impacts on the environment.

**Triune Engineering Qatar W.L.L.** will continually review and improve its processes and systems with special emphasis on the following:

- Committed to providing a healthy and safe work environment for its workers and preventing occupational illness and injury. To express that commitment, we issue the following policy on occupational health and safety;
- Responsible for the health and safety of its workers;
- Will make every effort to provide a healthy and safe work environment. We are dedicated to the objective of eliminating the possibility of injury and illness;
- Recognizes the worker's duty to identify hazards, and supports and encourages workers to play an active role in identifying hazards and to offer suggestions or ideas to improve the health and safety program; and
- Where possible, eliminate hazards and, thus, the need for personal protective equipment. If that is not possible, and where there is a requirement, workers will be required to use safety equipment, clothing, devices, and materials for personal protection

**Jeess Joseph**  
Managing Director  
March 1, 2021



(Logo of CB)

Supported and Verified with expertise of  
AEGIS SERVICES L.L.C.



### ENVIRONMENTAL POLICY

**Triune Engineering Qatar W.L.L.** is committed to reducing its impact on the environment. We will strive to improve our environmental performance over time and to initiate additional projects and activities that will further reduce our impacts on the environment.

**Triune Engineering Qatar W.L.L.** will continually review and improve its processes and systems with special emphasis on the following:

- Comply with all applicable environmental regulations;
- Prevent pollution whenever possible;
- Train all of our staff on our environmental program and empower them to contribute and participate;
- Communicate our environmental commitment and efforts to our customers, staff, and our community; and
- Continually improve over time by striving to measure our environmental impacts and by setting goals to reduce these impacts each year

**Jeess Joseph**  
Managing Director  
March 1, 2021



(Logo of CB)

Supported and Verified with expertise of  
AEGIS SERVICES L.L.C.







# CONTENTS

1	Introduction	6
2	Company Profile	7
3	Organization Chart	18
3	Key Personnel & Responsibilities	19
4	Equipment & Resources	21
5	Mechanical Installations	22
6	Electrical Installations	22
7	Plumbing & Drainage	23
8	Specialist Services	23
9	Environmental Policy	24
10	Fraud Policy	24
11	Occupational health & Safety Policy	24
12	Contact us	26



## INTRODUCTION

### MISSION STATEMENT

- To deliver high-quality, cost-effective projects on schedule by employing and supporting motivated, flexible, and focused teams. We value the importance of our relationships and will continue to remain fair and true in our dealings with all employees, clients, vendors, and partners. Our clients count on our dependability, our drive, and our integrity. We take great pride in our accomplishments and build on them every day.
- To provide value-added construction services to our customers by creating a successful partnership with them throughout the construction process.

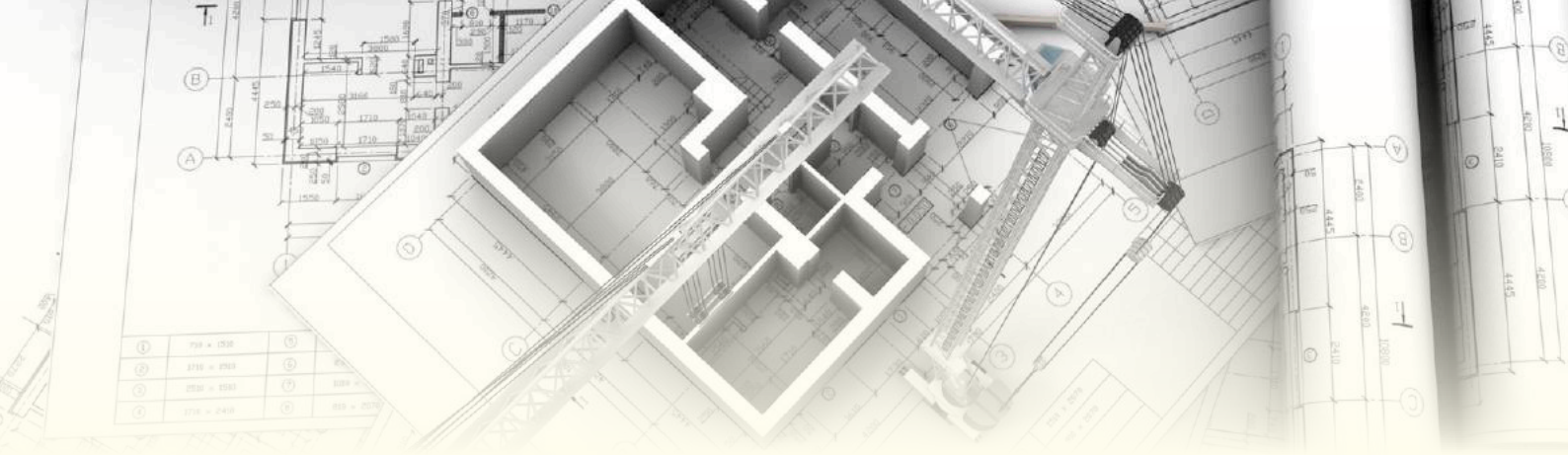
### CORPORATE PHILOSOPHY/VALUES

- To safely deliver any project for the benefit of our customers, employees and the communities we serve.
- Uncompromising commitment to Health, Safety and the Environment
- An open relationship with our customers and employees based on mutual trust and respect
- Transparency, Accountability and Discipline in our business
- Integrity, honesty, and fairness are at the heart of our company.
- We value an integrated culture based on diverse backgrounds, experience, and views.
- We plan and act for the future, for the long-term good of our company, customers, employees and community.
- Our pledge is to establish lasting relationships with our customers by exceeding their expectations and gaining their trust through exceptional performance by every member of the construction team

### VISION

- Commitment to be a premier contractor in the State of Qatar delivering projects and services to the complete satisfaction of our customers.
- Aspiration to be the contractor of choice for our Clients, Suppliers and Employees
- Dedication to participation in the continued successful development of the State of Qatar.
- Determination to grow and develop to meet the challenging construction and engineering needs of the State of Qatar. Customers and partners will see us as integral to their success. We will anticipate their needs and deliver on every commitment we make.





## Company Profile

We are pleased to introduce TRIUNE ENGINEERING QATAR WLL to you, established in Qatar to provide world class facilities of a first class company.

Triune Engineering Qatar WLL provides an inter related range of Civil, Structural & MEP engineering in many industries including Construction, Oil and Gas, Petrochemical, Power, Communication, General industrial and commercial purposes.

### Services Offered Are:

Design, Construction, Civil & MEP, Fit Out jobs, Maintenance and modifications works for schools & commercial buildings.

Design and Manufacture of approved Control Panels for Fire Detection and suppression systems incorporating state of the art engineered software solution to suit all projects.

Design, Installation, Commissioning and maintenance of Mechanical, Electrical, Medical Gas, Plumbing, Drainage, CCTV System and Air Conditioning services in the industrial, property and retail sectors.

World class experience, service and project management skills to deliver on time, on budget and to the highest quality.



## Olive International Primary School



## Olive International Kinder Garten at Abu Hamoor





# Olive International School at Khartiyat





## Olive International School Campus at Umm Salal Ali







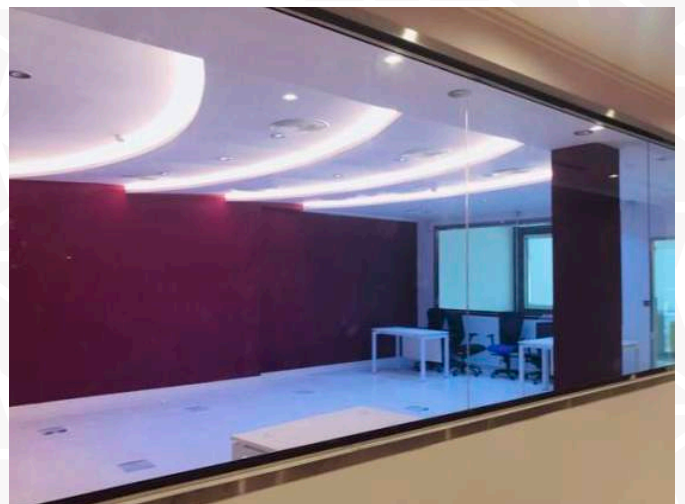
**MEP works & AMC at Al Zubeira tower, West Bay**



**Fit-Out works at The Melting Pot Restaurant**

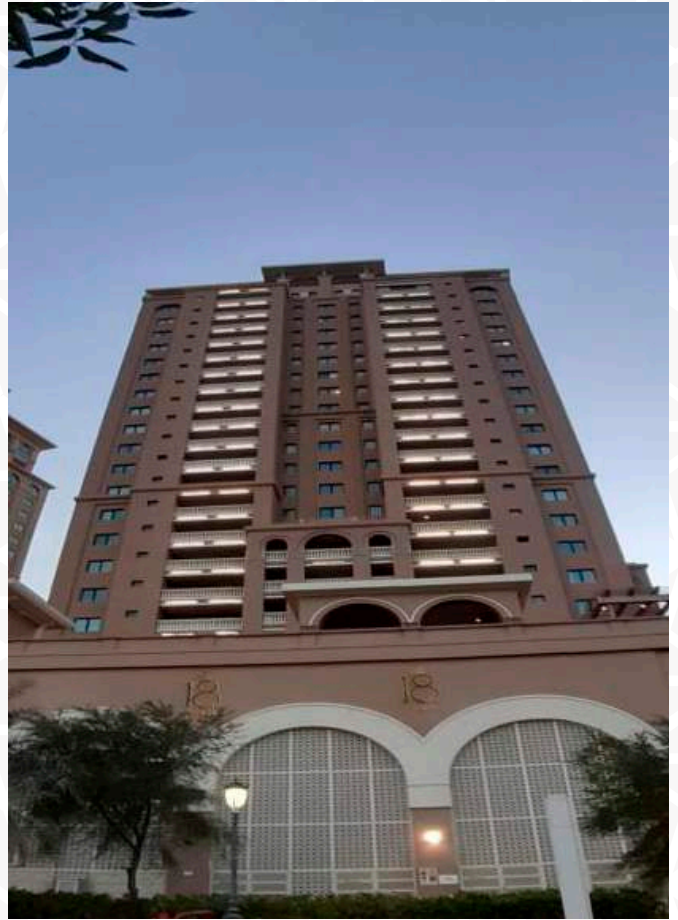


## Office Renovation Works - QCS





## Installation of Fazard lights





# Electrical & Plumbing Works





# Branding Works



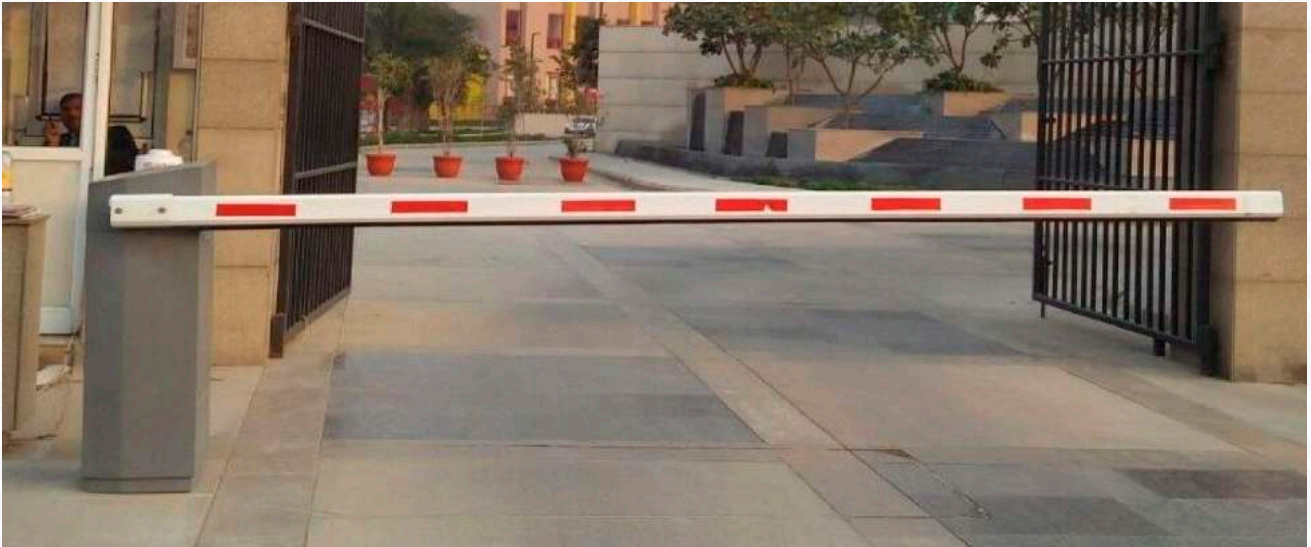


## Branding Works



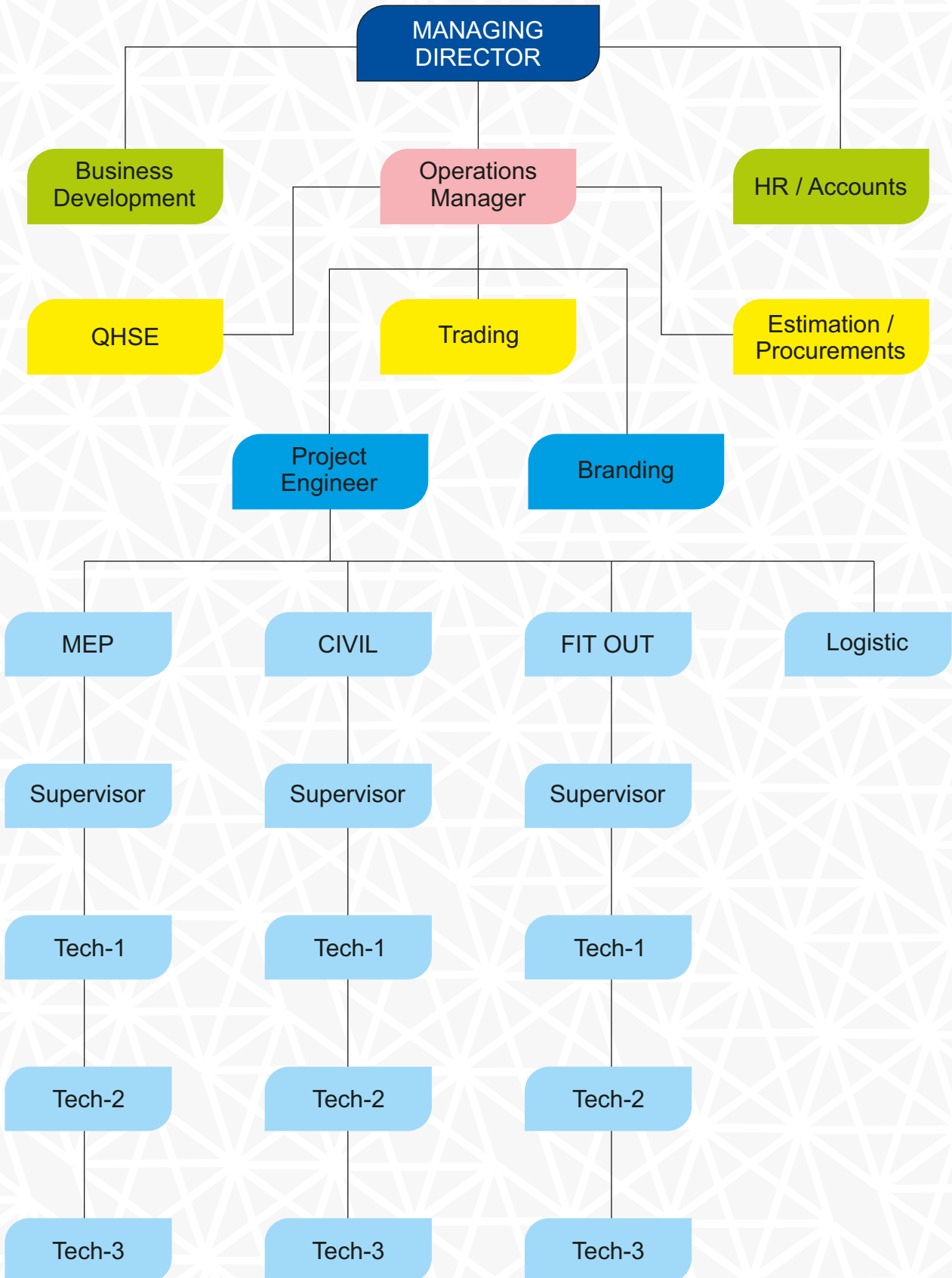


## Automatic Gate Barriers & Access Control





# ORGANIZATION CHART





## KEY PERSONNEL AND RESPONSIBILITIES

### **Project Managers are responsible for but not limited to the following activities:**

- i. To ensure fulfilment of time and efficient use of company resources, target the project to achieve the completion date without compromising quality or budget.
- ii. Responsible under command responsibility for safety and proper planning of resources at the project site for the well being and welfare of the personnel under his management involved in the jobsite.
- iii. Performs project management functions.
- iv. Attend Coordination meeting with Client/Representative, Main Contractor as required for the completion of the project.
- v. Coordination with Client for daily activities and contractual matters.
- vi. Implementation of company procedures and policies at project site.
- vii. To ensure fulfilment of the project time, budget and specification targets.
- viii. Shall perform other jobs as maybe required to ensure client satisfaction.

### **Quality Assurance /QC Engineer is part of the quality management; focussed on ensuring the quality requirements as per the standards required by the client:**

- i. Shall prepare, develop, modify and issue Method Statement Procedures (MSP), Inspection and Test Plans (ITP) and related safety procedures as required for correct project documentation.
- ii. Shall prepare the Job Safety Analysis (JSA) in coordination with Safety as required in the project documentation.
- iii. Shall be responsible for the inspections, witness testing and/or review of test data and quality audit based on project documentation requirements.
- iv. Shall conduct Quality Audit of completed work at the job site that shall comply with the requirements of the specifications, the QGEWC, QCS and other relevant standards.
- v. Shall carry out periodic inspection of completed work, review of testing and commissioning in coordination with the submitted data by site engineer, ensuring compliance with the project documentation requirements.
- vi. Shall perform coordination with the Client's representative, Project Manager, Site Project managers and Safety Officers for implementation and compliance with the Safety, Quality Management System and work standard requirements.
- vii. Shall perform other jobs as maybe required.



## **Safety Officer**

- i. All safety measures implemented at the jobsite for handling, transporting, installations, dismantling, etc. Hazards and risk assessment shall be prepared and disseminated to all concern to minimize the occurrence of avoidable incidents at the jobsite.
- ii. Coordination with project managers, QA/QC engineers, site engineers, foremen, supervisors, workers, client's representatives, etc at the job site on health and safety issues.
- iii. Shall conducts tool box talks and spot inspection on daily activities at jobsite of all personnel top prevent or minimize hazardous conditions and unsafe working practices.
- iv. Shall be responsible to implement safety rules and regulations and conduct exquisites should they become necessary.
- v. Shall be responsible for first aid treatment and shall coordinate with nearest hospital, police and fire department in case of accident or emergency.
- vi. Shall perform other jobs as maybe required to ensure the safety of people and property.

## **Concerned Site Engineers**

- i. Responsible under command responsibility for safety and welfare, supervision of foremen/supervisors efficient utilization of resources equipment such as materials & manpower and programming of installation, maintenance, testing etc. s required in the subject MEP & Fire System Preventive maintenance Procedures.
- ii. Responsible for site coordination of related equipment, works, etc with other trades at project job site.
- iii. Coordination with the main contractor staff or client for daily activities and contractual matters.
- iv. Coordination with the QA/QC engineer for the implementation of Quality Management System at project site.
- v. Responsible for the scheduling of tests and inspection of the works in coordination with the clients representative.
- vi. Shall refer to the project Operations and Maintenance manuals, as built drawings and manufacturer's recommendations for the installed MEP equipments.
- vii. Shall remind all workers under his command of their responsibility for the safety and welfare of people and property at the project job site.
- viii. Coordination with the supplier and client's representative for daily activities of the project as maybe required.
- ix. Shall be responsible for the supervision of foreman and supervisors, ensuring of good housekeeping at the job site upon completion of work. All scrap materials, rags, debris, etc, shall be properly stored and/or disposed of on a daily basis.
- x. Shall perform other jobs as maybe required at the project jobsite.

## **Site supervisor/Foreman**

- i. Shall be responsible for the tool box talks with workers prior to start of work at job site on day to day activities, the proper storage, handling, work refurbishments, cost effective utilization of construction materials at job sites ensuring minimum interruptions to the client.
- ii. Responsible under command responsibility for the safety and welfare of his site workers at project job site at every stage of work at job site.
- iii. Performs maintenance and installation of all works in accordance with approved plans, shop drawings, specifications, standards, Method Statements and quality workmanship.
- iv. Coordination with site workers for proper use of material resources and daily work at the project job site.
- v. Shall maintain good housekeeping at job site upon completion of work. All scrap materials, rags, debris, etc shall be properly and safely disposed of.
- vi. Shall perform other jobs as maybe required at the project site.



## Site Skilled Workers

- i. Responsible for safe and efficient performance of works at project job site and use the right tools for the job.
- ii. Performs maintenance works in accordance with approved plans, shop drawings, specifications, standards, Method statements with quality workmanship.
- iii. Coordination with junior technicians for joint efforts and use of all available resources and daily activities for the project.
- iv. Shall follow all company rules, guidelines, procedures and policies at project site.
- v. Site coordination works of related equipment with other trades at project job site to ensure efficient use of resources minimizing client inconvenience.
- vi. Shall maintain good housekeeping at job site upon completion of work. All scrap materials, rags, debris, etc., shall be properly and safely disposed of.
- vii. Shall perform other jobs as maybe required at the project jobsite.

## EQUIPMENT AND RESOURCES



### MANPOWER

We have ample facilities and resources to provide reinforcement manpower on an as needed basis from our in house teams offering skilled personnel in excess.



### VEHICLES

All our service vehicles are available with necessary service tools, equipment, devices and communication facilities. Where required we can avail of our affiliated sister companies for additional scaffold, carnage, generators etc.



### TOOLS AND SERVICES

We have sufficient standard craftsman tool kits to power tools of heavy duty state of the art machineries, calibrated devices to cover our maintenance works requirements.

All out Staff and Technicians are highly trained in workmanship ,Quality & Safety oriented to provide the highest productivity ,efficiency, reliability that guarantee customer satisfaction at reasonable cost.

**Our teams with dedicated on call Engineers, highly skilled supervisors, Technicians and craftsmen with full support from Management & Staff of the company.**

## During the progress of the MEP works the following should be observed.

1. Following the agreed schedule strictly.
2. Providing safe and healthy working conditions to the personnel.
3. Utilizing just the right number of qualified personnel required by the project.
4. Providing ample and ready logistics to avoid work stoppages.
5. Providing moral support to the working personnel.
6. Providing as many proactive alternatives to solve potential problems anticipated in the project.
7. Holding coordination /quality/safety meetings regularly to thresh out problems encountered no matter how small these maybe.
8. Holding regular coordination meetings to encourage free discussion of lesson learned.
9. Providing safety measures and protection to people , property , equipment, devices and tools delivered to the project site.
10. Encourage use of the right tool for the right job.
11. Cleaning and performing good housekeeping at all times and in particular at the end of each shift.





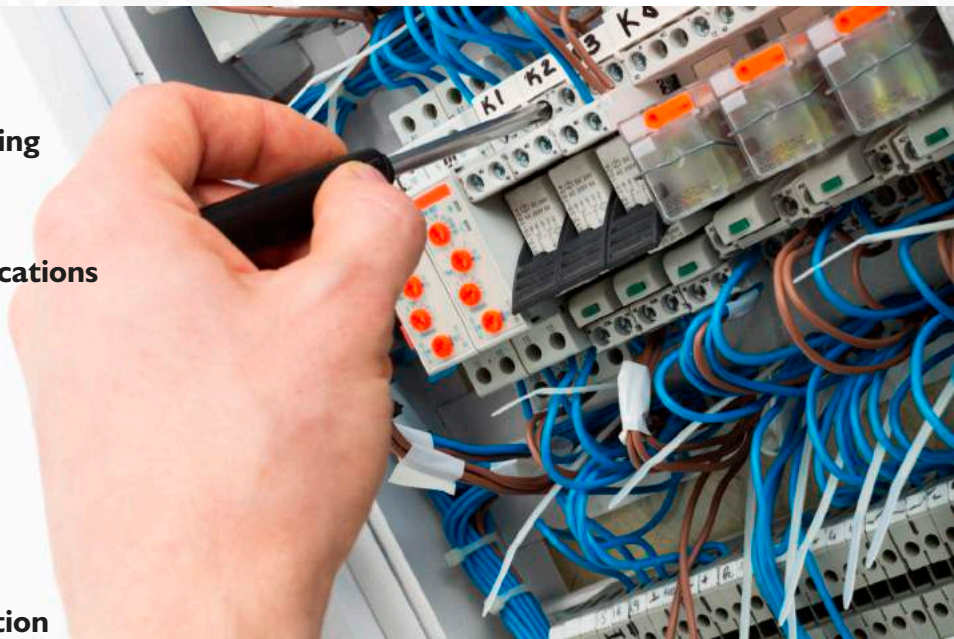
## Mechanical Installation



- **Plant Systems Mechanical Installation**
- **Pipe work**
- **Pipe racks**
- **Pipe bridges**
- **Pipe Welding**
- **Mechanical Equipment Installation**
- **HVAC**
  - Air Conditioning
  - Ventilation Systems
  - Heating systems
  - Pressurization Fan Installations
  - Extract fan systems
  - Installation of water cooled /Air Cooled Chillers
  - Air Handling & Fan Coil Units
  - Chilled Water Piping
- **Plant Systems Inspection and Testing**
- **Plant Systems Commissioning**

## Electrical Installation:

- **Electrical**
- **Control**
- **Instrumentation**
- **Cable Management/ Street lighting**
- **Equipment**
- **Building Services Systems**
- **CCTV/Access Control/Communications**
- **Fire Suppression**
- **Fire Alarm Systems**
- **Cable Pulling**
- **Gland & Terminations**
- **Test and Inspections**
- **Pre-Commissioning**
- **Commissioning**
- **HVAC Control and Instrumentation**







## Plumbing & Drainage:

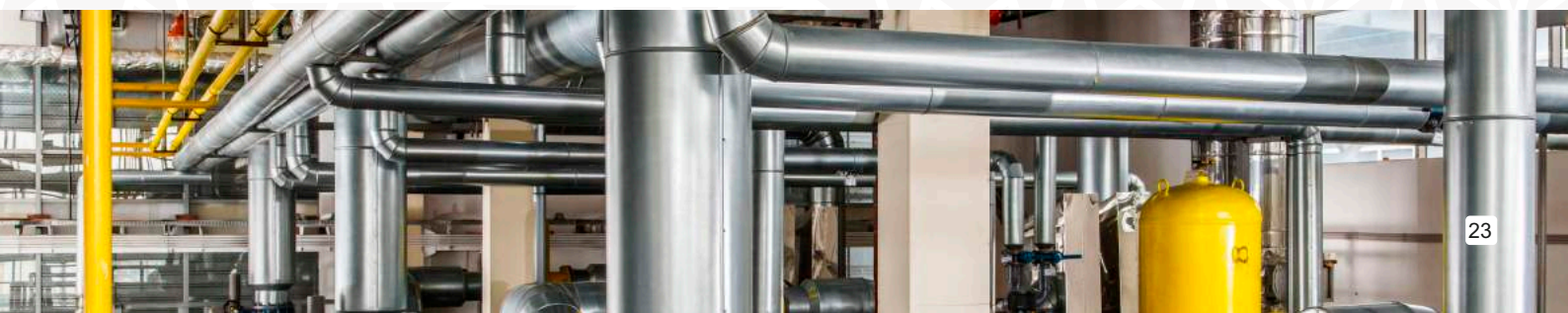
- Copper Pipe Installations
- Poly Butylenes Pipe Installations
- D.I. Pipe Installations
- UPVC Class “E” Pipe Installations
- ESVC Pipe Installations
- UPVC Pipe Installations
- Storm Water Pipe Installations
- Gravity Test
- Sanitary & Accessories Installations
- Desalination Plant Piping & Testing
- PPR Pipe Installations
- HDPE Pipe Installations
- Black Steel Pipe Installations
- Underground Drainage
- GRP Pipe Installations
- ABS Pipe Installations
- Sewage Pipe Installations
- Hydro Test
- Pump Design & Installations
- STP Installation & Testing

## Manpower:

- Project Mngers-01 no.
- Enginers-04 nos.(Civil & Electrical)
- HSE Officer- 1 no.
- Supervisors- 6 nos.
- Auto CAD Draughtsman-1 no.
- Plumber-2 nos.
- Masons – 20nos.
- Electricians- 10 nos.
- A/C technicians- 2 nos.
- Fire Alarm Technician- 1 no.
- Welders- 2 nos.
- Unskilled labours – 25 nos.
- Drivers – 4 nos.

## Specialist Services:

- Building/Office Maintenance Services
- Plant Maintenance
- Office/Building Cleaning
- Material Procurement, supply only
- Interior Design
- Interior Decoration
- Project Management
- Project Planning and Controls
- Delay Analysis





## ENVIRONMENTAL POLICY STATEMENT

We recognize the need for sustainable development and the protection of the environment for future generation.

The policy commitment of the Company is to strive in the execution of its operations to attain:-

- Efficient protection of the environment.
- Efficient use of natural resources.
- Proper awareness of all stakeholders.

This policy will be made known to all staff and will be reviewed on a regular basis.

## FRAUD POLICY STATEMENT

**We aim to combat fraud in every aspect of our business.**

The policy commitment of the company is:-

- To identify the key factors that allows fraud to occur and the way in which fraud is commonly detected.
- Not to condone any form of fraudulent or illegal act against the company.
- To take emphatic steps to redress any situation that becomes apparent through whatever channels.
- To involve the police and take legal action against perpetrators in all instances where material levels of fraud are suspected or identified, including the recovery of misappropriated company assets.
- To employ search, surveillance and monitoring techniques on company premises where it is considered to be in the overall interests of the Company and its employee.

The Administration & Financial Manager to be appointed to oversee and monitor this and associated documentation.

This policy will be made known to all staff and will be reviewed on a regular basis.

## OCCUPATIONAL HEALTH & SAFETY POLICY

It is the policy of the Company that its operations are executed at all times in such a way as to ensure, so far as is reasonably practicable, the health, safety and welfare of all its employees and all persons who may be affected by its operations.

The Company is committed to providing a safe and healthy working and living environment by both delivering high quality professional services to its clients and taking proactive measures to promote health and safety in all that it does.

The Company requires high standards of health and safety from its employees and contractors and is committed to monitoring its achievements and delivering a continually improving performance.

The Company accepts that the prime responsibility for safety rests with the line management of the Company and that safety matters are held in equal importance to other business objectives.

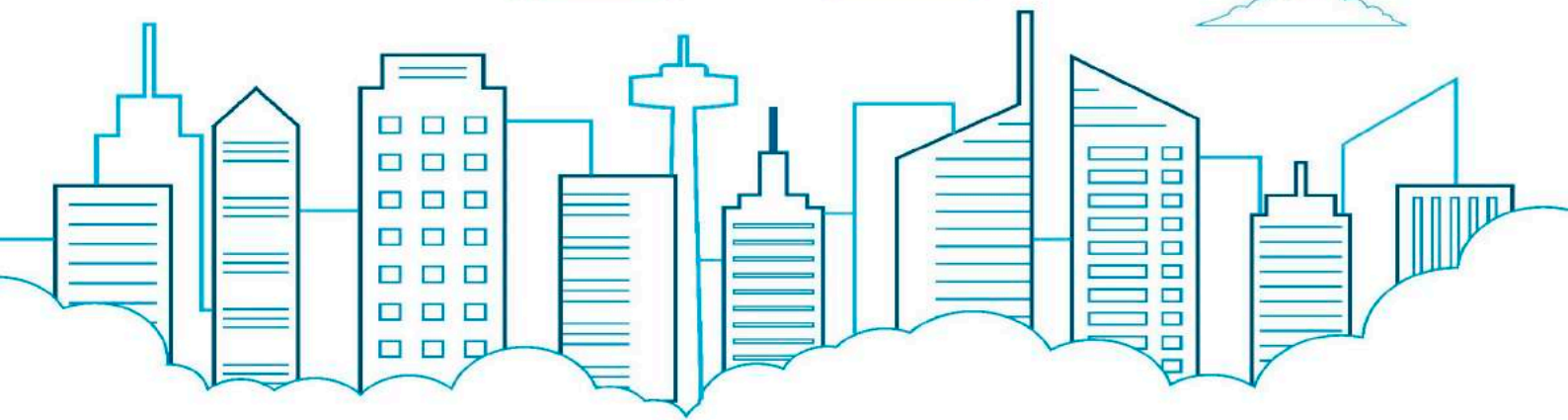
The Company is committed to complying with the applicable health and safety legislation of Qatar.

The Company recognizes that its people are its most important asset and it will provide them with appropriate health and safety training. The Company will also consult with its people to gain their active involvement and commitment to this policy and its successful implementation.

This policy will be made known to all staff and will be reviewed on a regular basis.



**Triune**  
ENGINEERING QATAR W.L.L.







P.O. Box No.24348, Doha- Qatar | Tel : +974 44123845  
Email :info@triuneqatar.com | Website : www.triuneqatar.com